

# Dubai Expo 2020

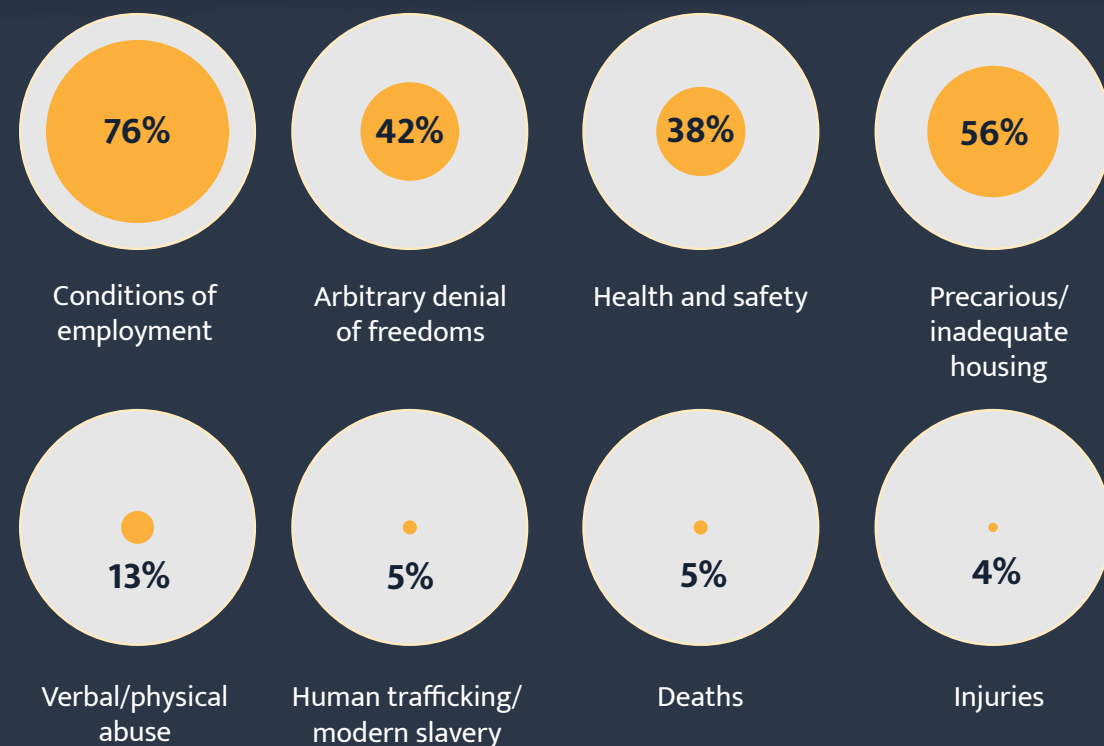
## As Dubai prepares for the EXPO, how are workers in the UAE impacted by labour abuse?

On 1 October the [Dubai EXPO](#), a six-month international fair which expects to welcome [25 million visitors](#), will open in the United Arab Emirates.

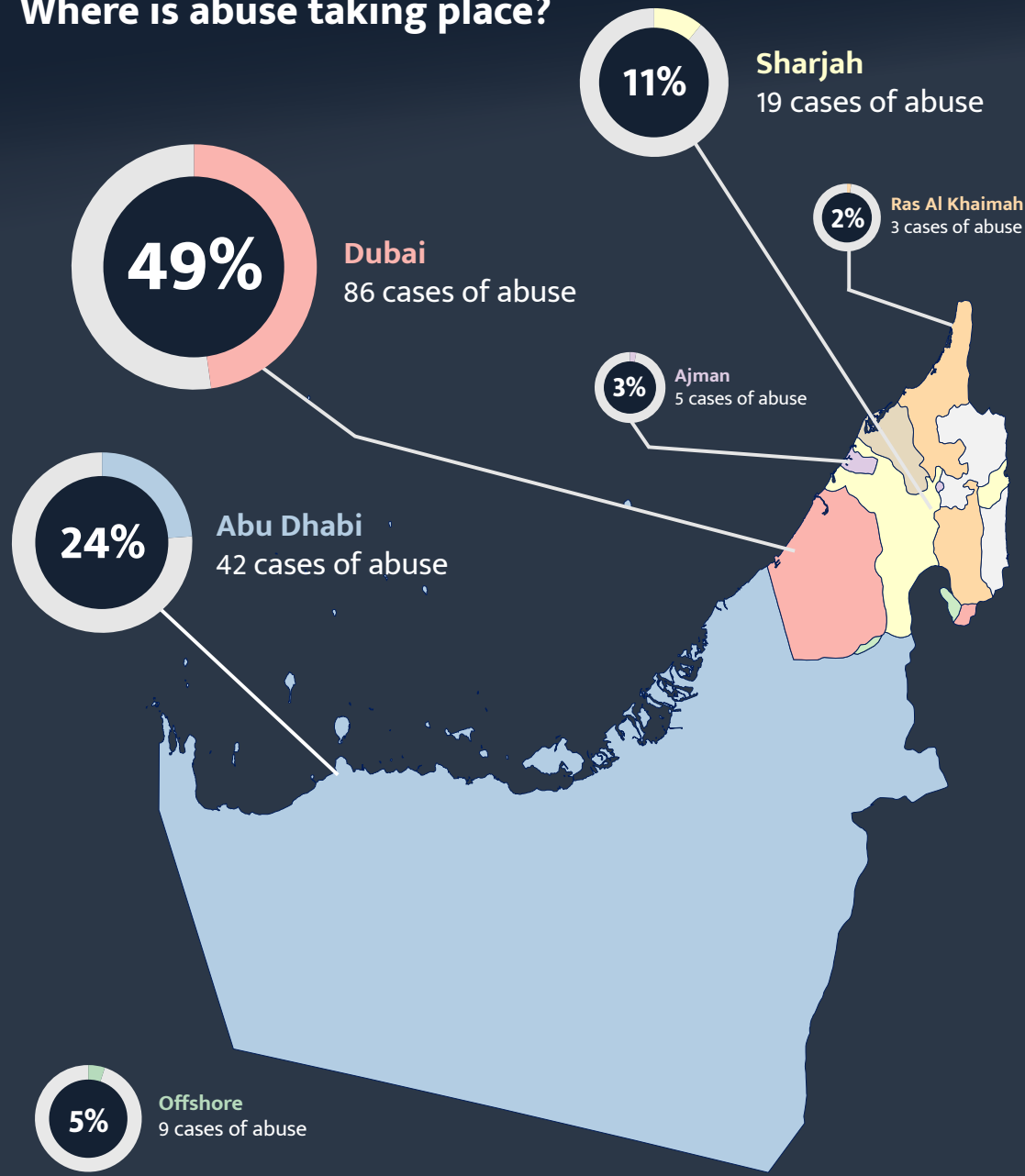
Our [data](#) shows migrant workers across the country continue to suffer severe and frequent labour abuse. The [almost 8 million workers](#) in the UAE remain at risk of suffering severe abuse facilitated by employment via the exploitative [Kafala system](#), with poor enforcement of regulation and workers' freedom to change employer curtailed.

*Data based on publicly reported allegations of labour abuse against migrants by businesses (January 2016 - August 2021). Read our [methodology](#) and a [discussion](#) of the challenges and limitations.*

### What are the most commonly reported types of abuse?



### Where is abuse taking place?



### At a glance:




cases of abuse recorded in the UAE since 2016 - the highest of the GCC countries, making up 36% of all cases in the region



workers impacted in 177 cases



of cases in the UAE took place in Dubai

 **Construction and engineering** saw the highest level of abuse (22%) followed by hotels, security and logistics, transport, catering, cleaning, and domestic work.



Workers from India, Bangladesh and Pakistan were most frequently affected by abuse.